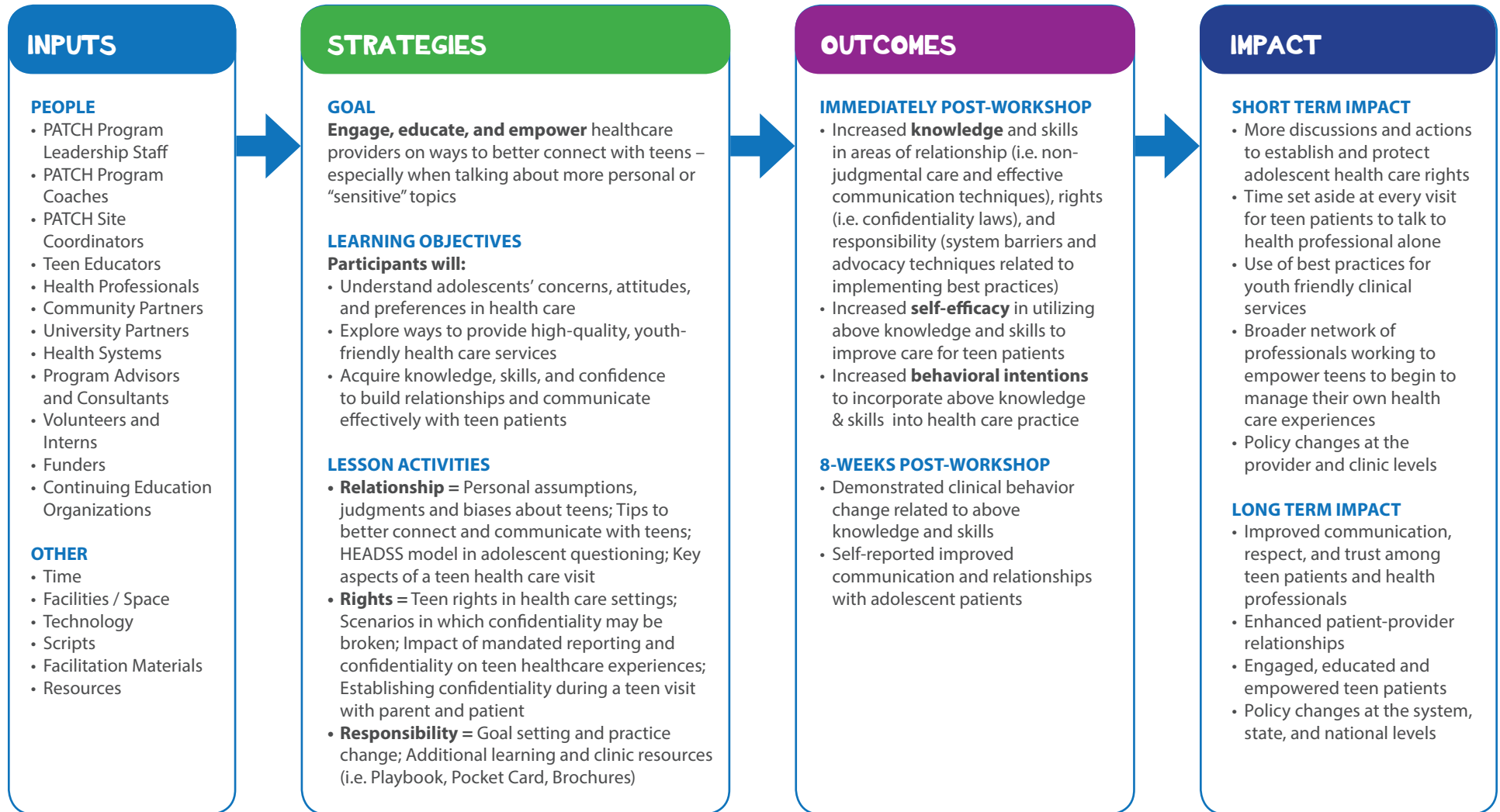


PATCH FOR PROVIDERS - LOGIC MODEL



SITUATION Regular preventive care (e.g., well-visits) for adolescents is one cost-effective strategy for improving population health. However, research indicates unique challenges that influence the effectiveness of adolescent preventive care. Adolescents often approach the health care system with confusion and uncertainty as well as a fear of being judged or lectured, which often leads them to either lie by omission or falsify information, directly impacting quality of care. Unfortunately, health professionals often receive little or no training on how to build stronger relationships with this population and improve adolescent willingness to engage in open and honest conversations. **The PATCH for Providers workshop aims to mediate these challenges by empowering health professionals to build stronger relationships with their adolescent patients, prioritize adolescent health care rights, and take responsibility for creating an atmosphere where teens can begin to successfully manage their own health and health care.**



ASSUMPTIONS

- Theory of Planned Behavior: Attitude toward behavior, subjective norm and perceived/actual behavioral control > Intention > Behavior
- Health care providers value the ability to offer comprehensive, medically accurate, age-appropriate health care to adolescents
- This one-time workshop is considered an introduction to adolescent health; Participants will utilize materials and resources to enhance practice

EXTERNAL FACTORS

- Variations in parental involvement in adolescent health care
- Individual health care professional beliefs and values
- Individual health care clinic/office internal policies
- Health education and delivery policies at local, state, and national levels